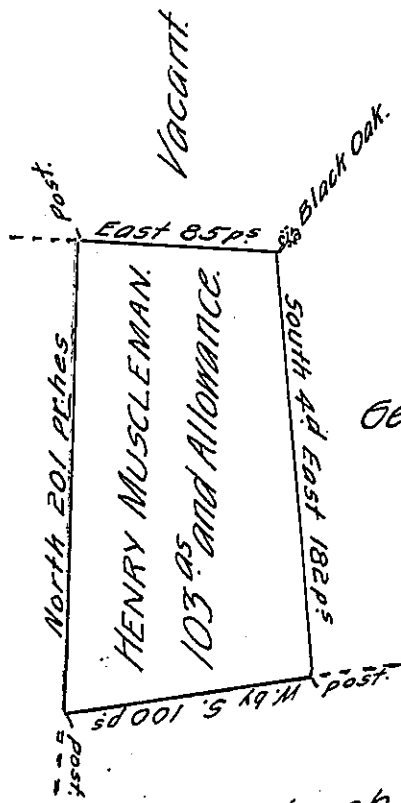


A 63-210

Henry Musclemann



Geo. Shallybarger

C182 - 255

Jacob Jacob

89-238

In Pursuance of a Warrant from the Proprietaries dated the 27th day of February 1734 Surveyed to Henry Musclemann on the 18th day of November the next Ensuing The above described Tract of Land situate on a branch of Little Cone-stogoe Creek in the County of Lancaster Containing one hundred and three Acres and the Usual Allowance for Roads.

Jr^o Taylor

to J S

IN TESTIMONY that the above is a copy of the original remaining on file in the Department of Internal Affairs of Pennsylvania, made conformably to an Act of Assembly approved the 16th day of February, 1833, I have hereunto set my Hand and caused the Seal of said Department to be affixed at Harrisburg, this twenty-ninth day of September 1905.

Loac 19
 Secretary of Internal Affairs.